

In this issue:

[Optimal Conservation Strategies Prototype on Target for End of December Delivery](#)

[South Atlantic LCC Logo](#)

[Strategic Planning Webinar for Stakeholders December 15, 2011](#)

[Update on Coordination Across LCC Boundaries](#)

[SALCC Project Video: A Landscape Genetics Pilot Study](#)

[Opportunities for Students at the National Park Service](#)

[New Book for Landscape Scale Conservation](#)

[How to Add Content to the South Atlantic LCC Website Part 2: Joining a Group](#)

Upcoming events

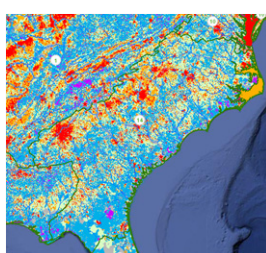
December 5th: [SALCC Staff at NC Longleaf Coalition Meeting, Raleigh, NC](#)

December 6th & 7th: [Strategic Planning Team Meeting, Raleigh, NC](#)

December 14th-16th: [SALCC Staff at ENC/SEVA Meeting, Gloucester, VA](#)

December 15th: [10am-11am EST Webinar to Present the Draft Strategic Plan to Stakeholders](#)

Optimal Conservation Strategies Prototype on Target for End of December Delivery



Wouldn't it be great if there was a tool you could use to see how a broad range of natural, cultural, and even socioeconomic resources could be affected by future threats like climate change, sea level rise, and urban growth? What if you could use that same tool to see how different conservation actions...[Read More](#)

South Atlantic LCC Logo

Your LCC now has an official logo...[Read More](#)

Strategic Planning Webinar for Stakeholders December 15, 2011

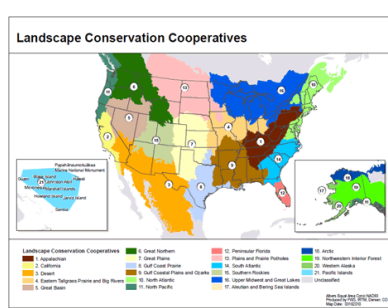


On **December 15, 2011 from 10am to 11am EST** there will be a webinar to present the **Draft Strategic Plan** to Stakeholders.

To join the meeting: [Read More](#)

Update on Coordination Across LCC Boundaries

Here are a few recent examples of how your LCC staff is working to coordinate with other LCCs: [Read More](#)



SALCC Project: A Landscape Genetics Pilot Study



Watch a video on an SALCC funded project: Identifying priority areas for land protection in the South Atlantic: a landscape genetics pilot study. [Watch Here](#)

Opportunities for Students at the National Park Service



This past month I attended my official orientation at the National Park Service regional office in Atlanta. It was a fantastic experience through which I learned the inner workings of how parks operate and how the regional office provides technical assistance to the parks. [Read More](#)

New Book for Landscape Scale Conservation:



[Posted by Partner C. Ashton Drew](#)

Expert Knowledge and Its Application in Landscape Ecology (edited by Perera, Drew, and Johnson), was officially released...[Read More](#)

How to Add Content to the South Atlantic LCC Website

Part 2: Joining a Group

One way to interact with your South Atlantic LCC is to join one or more of the working groups on this website. [Read More](#)



Hurricane Irene damage at Pea Island NWR. Credit: Tom MacKenzie, USFWS.